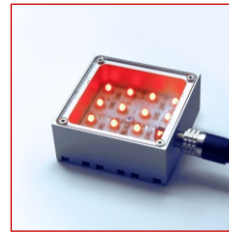


# TOP-LIGHT-40

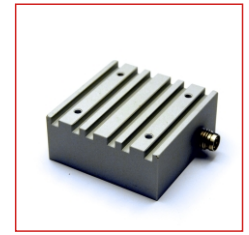
Incident light  
quadratic



- >> high quality model
- >> well-priced
- >> efficient thermal design
- >> easy mounting
- >> for continuous, switched and pulsed operation\*\*\*



TOP-LIGHT-40 red



TOP-LIGHT-40 housing  
with integrated cooling ribs

## Technical specifications

Housing	Alu milled, shot-peened, natural anodized
Front cover (incl. in delivery)	Acrylic 2mm clear, antireflex
Total weight	approx. 65g
Operating / ambient temp.	max. 50°C recommended
Service life of LEDs (at 25°C):	
red / IR	approx. 50.000 - 100.000 h
white	approx. > 20.000 h
Connector	M8 plug (4-pole)
Number of LEDs	16

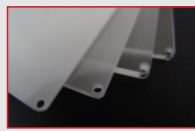
## Characteristics

Colour *	typical LED characteristics		typical light characteristics	
	Wavelength (approx.)	Viewing angle	Current (24VDC)	Intensity ** (DC operation)
HB red	617nm	30°	~ 60 mA	approx. 25 W/m <sup>2</sup>
HB red	617nm	60°	~ 60 mA	approx. 10 W/m <sup>2</sup>
HB red	635nm	120°	~ 40 mA	approx. 1 W/m <sup>2</sup>
HB white	x:0,32/y:0,31	120°	~ 55 mA	approx. 3 W/m <sup>2</sup>
HB IR	850nm	30°	~ 65 mA	approx. 20 W/m <sup>2</sup>
HB IR	850nm	50°	~ 65 mA	approx. 10 W/m <sup>2</sup>
HB IR	850nm	120°	~ 65 mA	approx. 5 W/m <sup>2</sup>

\* other colours and types on request

\*\* Measuring surface: centered, Measuring distance: 150mm

## Accessories



### Front covers

Through the use of different diffuse front covers the optical characteristics of the light can be changed.

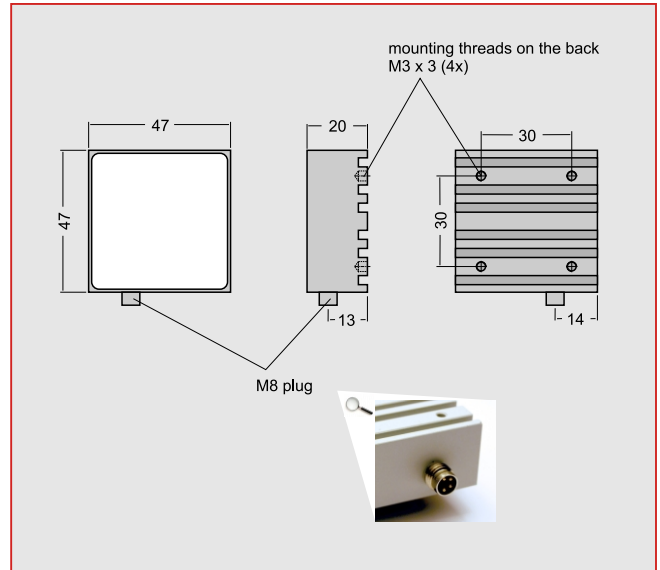
## Order numbers

Order number	Description
S190-617030HB-24-M8	TOP-LIGHT-40 HB red 617nm 30° 24VDC M8
S190-617060HB-24-M8	TOP-LIGHT-40 HB red 617nm 60° 24VDC M8
S190-635120HB-24-M8	TOP-LIGHT-40 HB red 635nm 120° 24VDC M8
S190-WLM120HB-24-M8	TOP-LIGHT-40 HB white 120° 24VDC M8
S190-850030HB-24-M8	TOP-LIGHT-40 HB IR 850nm 30° 24VDC M8
S190-850050HB-24-M8	TOP-LIGHT-40 HB IR 850nm 50° 24VDC M8
S190-850120HB-24-M8	TOP-LIGHT-40 HB IR 850nm 120° 24VDC M8

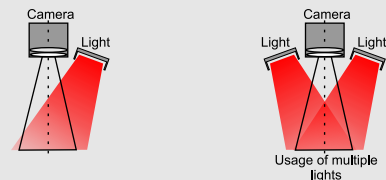
Accessories	Description
S190-12A	Front cover clear, antireflex (arf) 2mm
S190-13S2	Front cover 2-sided satinised 3mm
S190-23S0	Front cover material 010 3mm
S190-33S0	Front cover material 017 3mm
S190-42S0	Front cover material 060 2mm

More accessories in our accessories catalogue.

## Dimensions



## Application notes



Light which hits the surface from an specific angle physically produces a slightly inhomogeneous light spot, depending on the inclination. By using a symmetrical arrangement of several lights this occurring intensity drop can be compensated and increases additionally the intensity in the field of view.

## Operating methods

The lighting is designed for operation with 24VDC. The following operating modes are possible:

- continuous operation using a 24VDC power supply
- switched operation using a 24V power supply via e.g. PLC, opto relay or light controller (GS-series, SC-series with 24V power supply)
- brightness controlled operation via additional controller (SC-series or GS-series with 24V power supply)
- pulsed operation via additional controller (SC-series with 24V power supply or GS-series with 48V power supply). In this combination the operating current in pulsed mode can be raised by a factor of approx. 2-3.

\*\*\* For solely pulsed operation the lights are optional also available as optimized pulsed versions (SC-type) for higher pulse currents. They can be used in combination with controllers of the GS- or SC-series with 24V power supplies and allow a maximum of current feed.  
More information on request.

technical changes reserved



### Safety precautions!

LED light systems can produce very intense radiation, which may damage human eyes on improper usage. Do not look directly into the light beam with unprotected eyes! Use eye protection!

### Büchner Lichtsysteme GmbH

Büschelstraße 8a  
D-86465 Welden

Tel.: +49 (0)8293 | 909 112  
Fax: +49 (0)8293 | 909 111

E-mail: info@buechner-lichtsysteme.de  
Web: www.buechner-lichtsysteme.de

www.imaging-light-technology.com

IMAGING LIGHT TECHNOLOGY  
**BÜCHNER**